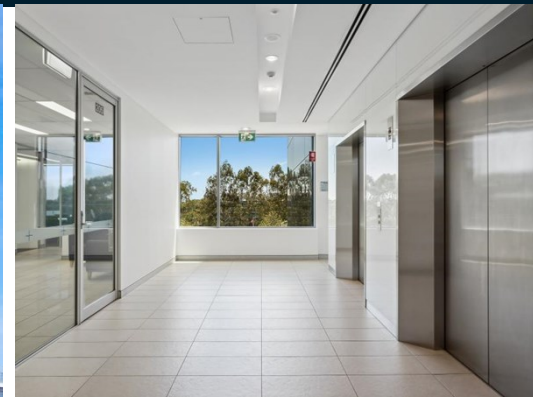


FOR LEASE



Scan to View
Online Advert



Suite 204 & 205, 2-8 Brookhollow Avenue, NORWEST 2153

“ATLAS” office 248sqm off the lift lobby

- 248sqm office + 2 balconies
- Exposure off the lift lobby
- Fitout + new carpet & paint will occur
- Virgin Gym & café onsite
- Walk to train, shops & restaurants

Location

Avoid the traffic being at the entry site of Norwest Business Park where the Virgin Active Gym & Coffee Club café/restaurant is located. Across the road from Rydges Hotel and a quick walk to Serviced Apartments, Norwest train station, bus stop, Marketown Shopping Centre and the Lakeside restaurants.

Description

This office gets great exposure with its entrance off the lift lobby. 2 meeting rooms off the reception/waiting area. Large open plan office area for workstations, with 3 executive offices and a great staff kitchen area. 2 balconies for staff lunches and informal meetings that allows fresh air into the office. Office will have fresh paint and new carpet for the new incoming tenant. This won't last - book an inspection.

Property Type:	Office
Total Area m²:	248
Rent:	\$117,700 pa net + O/G + GST
Outgoings pa:	Payable by tenant
GST	All prices are exclusive of GST
Parking Spaces:	10

Contact:



Lee Pascoe
0408 687 344
lee@partnercom.com.au



David Brae
0478 166 118
david@partnercom.com.au

partnercom.com.au

101B/ 8 Century Circuit, NORWEST