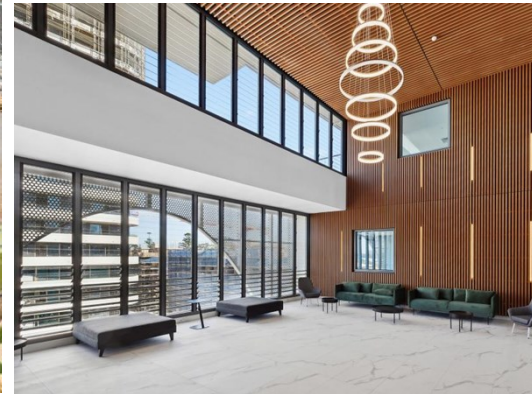
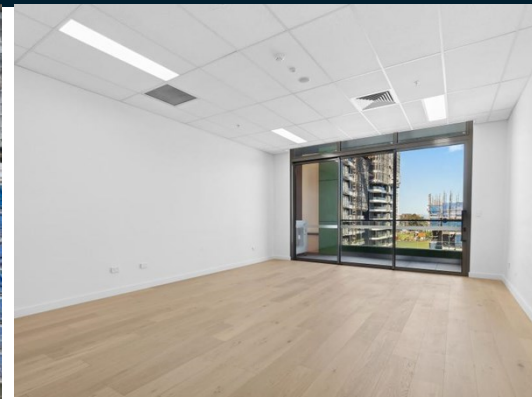


FOR LEASE



Scan to View
Online Advert



Suite 611, 7 Maitland Place, NORWEST 2153

New 40sqm office + 7sqm balcony & 2 car spaces



- Brand new 40sqm office + 7sqm balcony
- 2 undercover car spaces
- Common meeting room available
- Walk to restaurants, shop & train

Location

This brand new development is located on Maitland Place, backing onto Castle Hill golf course. Walking distance to lakeside restaurants, Norwest shopping centre, train station and bus stop. A café will occupy the ground floor and the rooftop has the impressive Ciel Restaurant and Bar (owner of hatted restaurant Quoi Dining by Joshua Mason). One street from Rydges Hotel and Virgin Active Gym.

Description

This office is modern and open plan with plenty of natural light filtering throughout the office. Exclusive 7sqm balcony for time out/coffee breaks and it also allows fresh air into the office. Common meeting room available for tenant use and several upmarket break-out areas in the building for a more casual meeting. Book an inspection now.

Property Type:	Office
Total Area m²:	40
Rent:	\$25,000 net pa + O/G + GST
Outgoings pa:	Payable by tenant
GST	All prices are exclusive of GST
Parking Spaces:	2
Contact:	
	Julian Shankland 0447 850 414 julian@partnercom.com.au
	Lee Pascoe 0408 687 344 lee@partnercom.com.au

partnercom.com.au

101B/ 8 Century Circuit, NORWEST