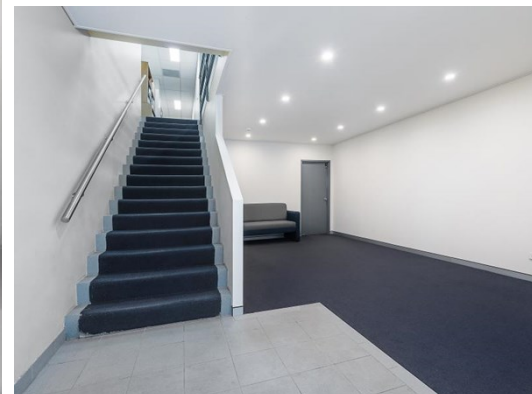
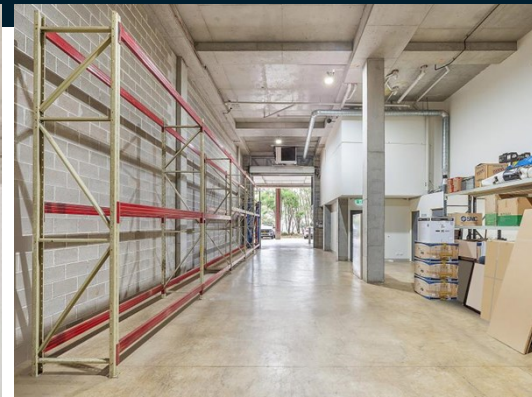


# FOR LEASE



Scan to View  
Online Advert



## Unit 14, 7 Inglewood Place, NORWEST 2153

284sqm Warehouse Norwest Business Park. Undercover Loading + New Carpet/Paint.

- Walk to shops, restaurants & train
- New paint & carpet occurring
- All undercover loading
- Plenty of visitor & street parking
- High clearance warehouse

### Location

Located in the world class Norwest Business Park with all the staff amenities you require. Walking distance to the shopping centre, restaurants, cafes and the Norwest train station. A few streets away from gyms, hotels and the Castle Hill Golf Club.

### Description

Rarely available industrial unit in the prestigious Norwest Business Park, offering staff & visiting clients all the amenities you desire. Parking out front for clients & undercover secure parking for you. Ground floor entrance is perfect for showroom/product pick up or boardroom. Mezzanine office - open plan & meeting room or an impressive manager's office with floor to ceiling glass. Complex offers undercover loading with a high clearance warehouse. Warehouse concrete roof offers great moderate temperature - perfect for temperature sensitive products (unlike typical units with metal roofs which are cold in winter and hot in summer).

<b>Property Type:</b>	Industrial
<b>Office m<sup>2</sup>:</b>	84
<b>Warehouse m<sup>2</sup>:</b>	200
<b>Total Area m<sup>2</sup>:</b>	284
<b>Rent:</b>	\$75,260 net pa + O/G + GST
<b>Outgoings pa:</b>	Payable by tenant
<b>GST</b>	All prices are exclusive of GST
<b>Parking Spaces:</b>	4
<b>Contact:</b>	
	<b>Julian Shankland</b> 0447 850 414 julian@partnercom.com.au
	<b>David Brae</b> 0478 166 118 david@partnercom.com.au

[partnercom.com.au](http://partnercom.com.au)

101B/ 8 Century Circuit, NORWEST